



iPass Open Mobile 2.1 for iOS Quick Start Guide

VERSION 1.0, MARCH 2012

Corporate Headquarters
iPass Inc.
3800 Bridge Parkway
Redwood Shores, CA 94065 USA

www.ipass.com
+1 650-232-4100
+1 650-232-0227 fx

TABLE OF CONTENTS

Installing and Activating	4
Technical Requirements	4
Installing Open Mobile	4
By Profile ID and PIN	4
Activation by URL	5
Default Mode	6
Updating the Directory	6
Uninstalling	6
Using Open Mobile	7
Dashboard	7
Current Connection	8
Log In/Out Button.....	8
Account Settings	8
How to Connect	10
Usage Meter	11
Usage Settings	11
Hotspot Finder	12
Support for Open Mobile	13
Send Logs	13
Troubleshooting Tips	13
About iPass Open Mobile	14

Copyright ©2012, iPass Inc. All rights reserved.

Trademarks

iPass, iPassConnect, ExpressConnect, iPassNet, RoamServer, NetServer, iPass Mobile Office, DeviceID, EPM, iSEEL, iPass Alliance, Open Mobile, and the iPass logo are trademarks of iPass Inc.

All other brand or product names are trademarks or registered trademarks of their respective companies.

Warranty

No part of this document may be reproduced, disclosed, electronically distributed, or used without the prior consent of the copyright holder.



TABLE OF CONTENTS

Use of the software and documentation is governed by the terms and conditions of the iPass Corporate Remote Access Agreement, or Channel Partner Reseller Agreement.

Information in this document is subject to change without notice.

Every effort has been made to use fictional companies and locations in this document. Any actual company names or locations are strictly coincidental and do not constitute endorsement.



Installing and Activating

Technical Requirements

iPass Open Mobile 2.1 for iOS requires the following:

- iOS 4.x or later
- Multitasking support (for example, iPhone 3GS or later, iPod Touch 3rd generation or later, or any iPad)
- An iPass account

Installing Open Mobile

Installation and activation can take place in one of two ways: by Profile ID/PIN, or by URL.

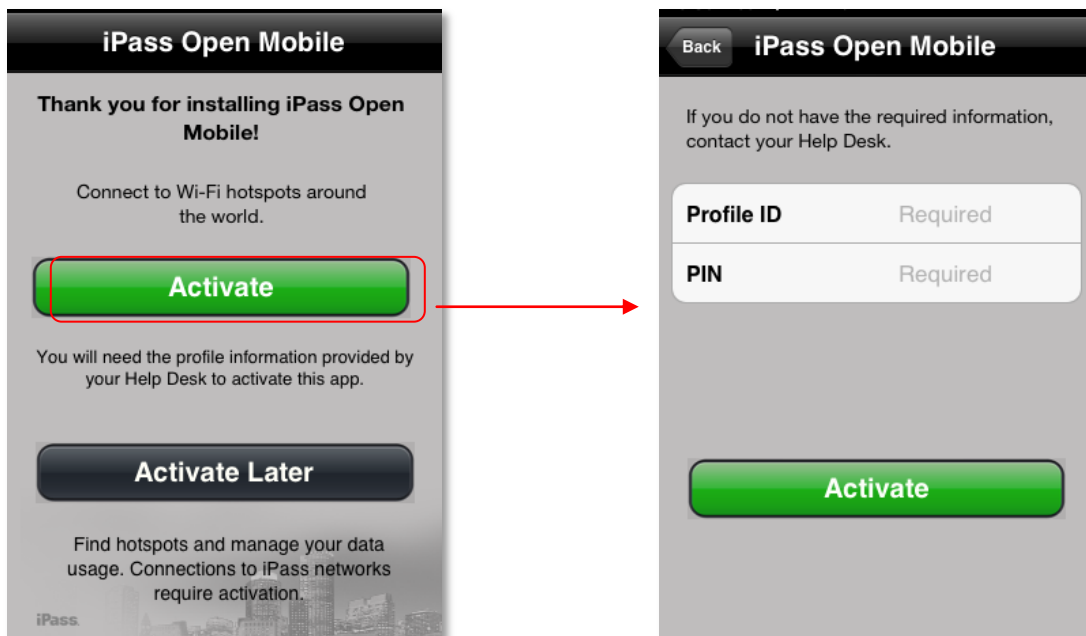
By Profile ID and PIN

If your administrator has chose to enable this method, download the application from the iTunes App Store, and install it on your iOS device (iPhone, iPad, or iPod Touch).

After downloading and installing, you will need a Profile ID to activate Open Mobile. You may also require a PIN.

Tap the **Activate** button on the Welcome Screen, and on the Activation Screen enter your Profile ID (and optional PIN, if required).

If you do not have a PIN, you should leave that field blank.



Test Profile Mode

If you are testing the app, tap the bottom left corner of the screen three times to enter Test Profile Mode before entering the Profile ID and PIN.

Activation by URL

If your administrator has chosen to enable this method, two URLs (Web addresses) will be supplied to you by email or other method.

- The first URL will give the link for the Apple App Store, where you can download the application.
- The second URL will give the link to complete the activation.

If this method fails, you will be able to activate using the Profile ID/PIN method, described above. You will require the Profile ID and PIN in order to complete this.

Default Mode

If you do not have a Profile ID and PIN, you can tap **Activate Later**. You will have access to the Usage Meter and Hotspot Finder, but you will not be able to use the app to authenticate to iPass Networks. You can activate the app at any time by tapping **Activate Now** button on the Dashboard.

Updating the Directory

Open Mobile will automatically update your directories on a regular basis. (Open Mobile will try to update directories over Wi-Fi for up to 30 days. If the update is not completed, it will attempt the update over a 3G connection.)

In addition, you can manually update your network directories by tapping the **Settings > About > Check for Updates**.

Uninstalling

To uninstall Open Mobile, hold your finger over the app icon until it shakes, then tap the cross on the upper-left hand corner. When the dialog opens, select **Delete**.



Using Open Mobile

Dashboard

The Dashboard, as it appears on an iPhone or iPod Touch, is shown here.





The Dashboard, as it appears on an iPad, is shown here.



Current Connection

Current Connection displays the current network name and a timestamp of when the connection started.

-  indicates an iPass Network.
-  indicates an OpenAccess (free) network.

Log In/Out Button

Tapping the **Log In** button logs in to the current network with your iPass credentials, and tapping the **Log Out** button disconnects from the current network.

*Open Mobile cannot be used to disconnect from an Open Access network. If the network is OpenAccess, the **Log Out** button will not be displayed.*

Account Settings

Enter your iPass credentials before logging in to an iPass network.

To enter your account credentials:

1. Tap **Settings** button.
2. Tap the **Account Settings** button.

3. Enter your **Username**, **Password**, **Domain**, and **Prefix** (optional) by tapping on each box and using the keyboard.




How to Connect

Open Mobile works with the native iOS Wi-Fi settings to connect you to the Internet.

To connect to an iPass Network:

Tap the iOS **Settings** icon. 

1. Tap **Wi-Fi**.
2. Select a network from the list.

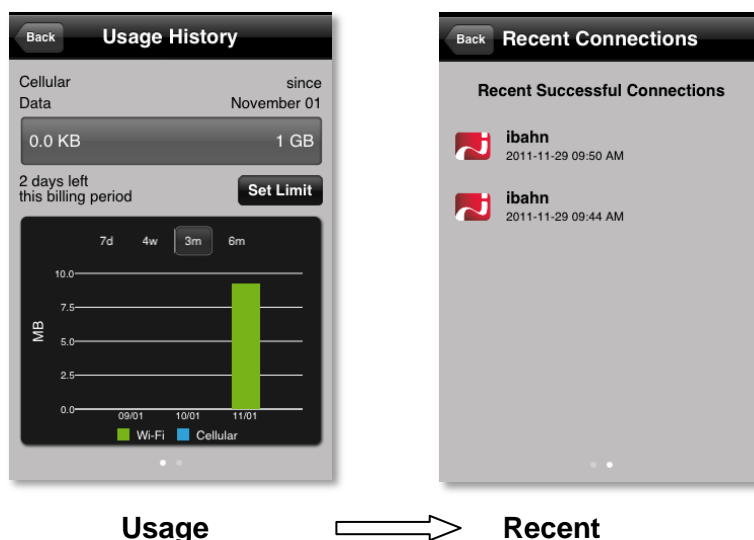
3. Return to the home screen and tap the **Open Mobile** icon. 

4. On the dashboard, tap the **Log In** button.



Usage Meter

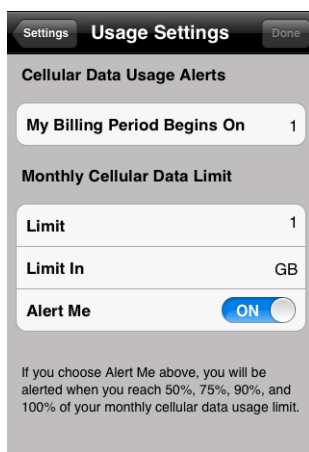
You can swipe between two Usage Meter screens. The Usage History screen has graphs of your data usage, and the Recent Connections screen shows your last 20 successful connections.



Usage Settings

Open Mobile can alert you when you are close to your monthly cellular data limit.

Due to a limitation in iOS, usage alerts will only function when the app is running in the foreground.

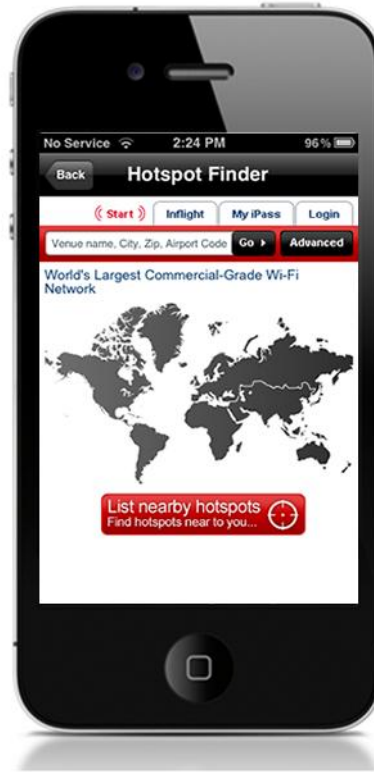


To set the cellular data limit:

1. Tap the **Set Limit** button on the Usage Meter screen (or the **Usage Setting** button on the Settings screen).
2. Tap the **My Billing Period Begins On** button and enter the first calendar day of your billing period.
3. Enter your limit by tapping **Limit** and entering the number, and then tapping **Limit In** to enter the memory unit.
4. Slide **Alert Me** to **ON**.

Hotspot Finder

Open Mobile for iOS includes a Hotspot Finder that enables you to locate iPass Wi-Fi hotspots anywhere in the world. You can enter a location in the search box or tap the **List nearby hotspots** button for a list of hotspots and their locations. The Hotspot Finder requires an Internet connection to function.



Support for Open Mobile

Send Logs

You can send troubleshooting logs to your help desk, to diagnose connectivity problems.

To send troubleshooting logs:

1. Tap **Settings**, then tap **About**.
2. Tap **Send Logs**.
3. An email will open with a Troubleshooting Report attached. Enter the email address of your Help Desk in the To: field and describe the problem in the body of the email.
4. Tap **Send**.

Troubleshooting Tips

These tips may be helpful in resolving issues with Wi-Fi connections.

Duplicate SSID

Open Mobile identifies iPass Wi-Fi networks by their network name (SSID). A network name that duplicates a network name in the iPass Network directory will display the iPass logo in Open Mobile, normally indicating that it is an iPass network. However, there are some circumstances where the indicated network is not actually an iPass location, such as the following:

- The local provider is using a name that is also used by one of the iPass network providers.
- The local provider has other locations that are part of the iPass service, but has excluded this particular location.

Failed Venue Login

On occasion, an association to a Wi-Fi access point is successful, but the log in to the venue fails because of a timeout, authentication failure, or some other error.

Connecting to an iPass network requires not just a successful association; Open Mobile must also receive an IP address from the venue and it must be able to pass HTTPS communication to the access gateway. A weak signal can cause a failure in the IP address assignment or HTTPS communication. Moving closer to the access point, or moving to a location with a stronger signal, may resolve this situation.

Back-End Infrastructure Issues

Authentication errors can occur if the back-end authentication infrastructure is not available. This could be an outage at the provider, or with your RoamServer or AAA system.

Personal Wi-Fi

Some common issues that can occur for personal Wi-Fi access points include:

- The home access point has MAC address filtering, which prohibits the user from communicating over it even



- if a successful association is made.
- A weak signal prevents association.

About iPass Open Mobile

Before contacting your help desk, note the version of Open Mobile and the Profile ID they are using by tapping **Settings > About**.



Document Changelist	
Version 1.0, February 2012	Activation by URL



